

Fulton, Maryland is about 20 miles north of Washington DC. When my family moved there in 1951, it had the general flavor of a sleepy hamlet, although people in the area were certainly productive.

We lived across the road from one of the three oldest houses in Howard County, Sarah Moore's place, which was on about 100 acres of mostly-cleared land. "Miss Sarah" Moore's house was built in the early 1700's. In 1963, some time after she passed away, the house was disassembled, moved elsewhere, and reassembled as a museum, making way for the Mooresfield, Maryland development.

Sarah Moore's house. (earlier & later a.k.a. "Partnership")

1960

photo: Vernon M. Setterholm (dad)

Moore1.jpg



House coordinates were: 39d09m42.8s N, 76d55m14.5s W

As a child, with my mother's encouragement, I visited Miss Sarah on a number of occasions. In every visible, recallable respect, the clock of her world was running on early 1920's time, Grace (mom) once stopped by her place during a "get out the vote" campaign. Miss Sarah declined to vote, because her father, who had died in the 1920's, didn't believe that women should vote. Her 1920's touring car was still in running order in the late 1950's.

1960 VMS Moore2.jpg



1960 VMS Moore5.jpg



1960 VMS Moore3.jpg



1959 VMS Moore6.jpg



1960 VMS Moore4.jpg



PartnerP.jpg



The family that built the house ~50 years before the American Revolutionary War called it "Partnership". The house had passed to Moore family ownership by 1850.

2003 SVS Moore7.jpg

Descendents of the original owners of the house arranged for the disassembly, transportation, and restoration of "Partnership" north of Baltimore.



Across the road was "Workhurst", our family's place, which had been built about 1918,

1951 VMS Wkhst1L.jpg



1966 VMS Wkhst20.jpg



and had physically vanished by 2002, save for the basketball backboard frame, and delightful memories.

2002 SVS Wkhst20b.jpg



JMS SVS12L.jpg



This is a crossed-eye stereo pair of the area, including both Sarah Moore's and Workhurst, as photographed by the USAF in 1959 from 30,000 feet:

Moore3D.jpg



Sarah Moore's Property @ Fulton, Maryland, future site of MooresField.

House: 39° 09' 42.8" N, 76° 55' 14.5" W

This is an aerial view of the same area that I took in 1966, when the development of Mooresfield was well underway:

JMS

Wkhst21.jpg



Topo57.jpg shows part of the 1957 USGS topographic map of the area:

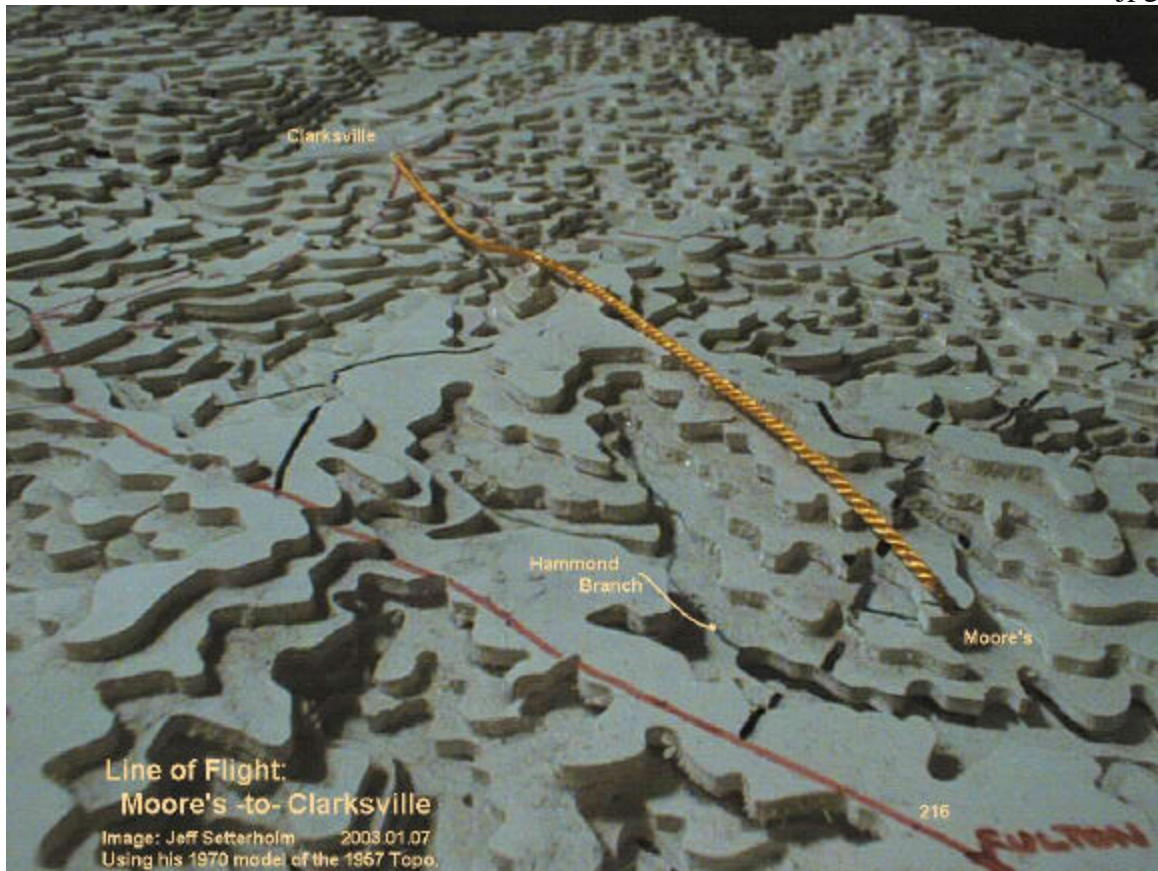
In 1951, U.S. 29 had not yet been built, nor was the reservoir there. The moving van that moved us from Silver Spring, MD to Fulton did a U-turn at the bridge and found another way across the Patuxent River. I remember the old bridge, with its loose and missing planks, and the clatter of driving across it.



This is an image of a model of the area that I built using the topographic map in 1970:

JMS

T-los3b.jpg



The Hulburt's farm was immediately north of Sarah Moore's place. The 1957 topo, a 1966 aerial, and a 1993 USGS IR orthophoto of the scene area are included in the image. The area, now known as the Hopkins Mead development, is located about one mile north of Fulton, MD.

WCH +

Hulburt1.jpg



Individual images:

Moore1.jpg - shows a ground view of Sarah Moore's House on 1960.02.14.
Photo by Vern Setterholm

Moore2.jpg - 1960.02.14 - looking NW - entry area

Moore3.jpg - 1960.02.14 - looking NNW - house
(The house was moved in 1963, so the labeled
recollection date of 1964 is incorrect.)

Moore4.jpg - 1960.02.14 - looking NE - wagon * House

Moore5.jpg - 1960.02.14 - looking ~S - barn

Moore6.jpg - 1959.10.17 - looking NNE - house & Janney's

Moore3D.jpg - is a historic view of what is now MooresField, near Fulton, MD.

Sarah Moore's property/neighborhood as of 14Dec59 from 30,000'.
An approximate stereo pair: set up for crossed-eye viewing.

PartnerP.jpg- a view of "Partnership" which is thought to be the same place as Miss Sarah's house, so named at the time it was built (1720~1730) by its original owners. It was said that the house had been built with bricks that had come over as ballast on a British merchant ship.

Aerial Photography, Maps, etc.

Moore7.jpg - 2003.04.15 - "Partnership Restored!" Image: Steve Schwab

Topo57.jpg - The 1957 USGS topographic map of the Fulton Maryland area.
I added some labels.

Wkhst21.jpg - An oblique aerial photo of MooresField that I took in 1966.

T-los3b.jpg - An oblique view of a 3-D model of the 1957 topo... from back in the days when 3-d terrain modeling wasn't as easily done as it is today.

APL2.jpg - a 3.4 megabyte scan of the 14Dec1959 USAF aerial photography. Hall's Shop, MD is at the upper left corner, Scaggsville MD is near the lower right corner. The Johns Hopkins Applied Physics Lab is near the upper right corner. Labeled next to Fulton, MD.

Scaggs1L.jpg- "Scaggsville Elementary School" Photo: Vern Setterholm 1962.02.10

Workhurst Pictures

Wkhst1L.jpg- "Workhurst: Summer 1951" Photo: Vern Setterholm (dad)

Wkhst20.jpg - "A Wet Snow at Workhurst". Our family home 1951-1972.
Across the road from Miss Sarah's, and visible in Moore3D.jpg.
(Now vanished almost without a trace, save delightful memories.)
Photo: Vern Setterholm 1966.12.13

Wkhst20b.jpg - "Workhurst Was Here". Photo: Steve Schwab 2002.03.07

Steve12L.jpg- "The Ghosts of Workhurst" Double Exp: Jeff Setterholm mid 1960's

Hopkins Mead Picture

Hulburt1.jpg - "Lynn on Pixie, Jan on Matches" Photo: W.C.Hulburt 1957.11.24